



**We love that you are rocking JLab!
We take pride in our products and fully stand behind them.**

JLAB
GO KEYBOARD +
MOUSE BUNDLE



YOUR WARRANTY

All warranty claims are subject to JLab authorization and at our sole discretion. Retain your proof of purchase to ensure warranty coverage.



CONTACT US

Reach out to us at support@jlab.com or visit jlab.com/contact

REGISTER TODAY

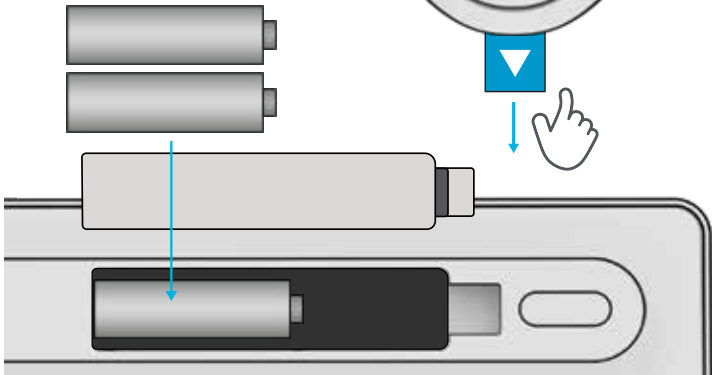
jlab.com/register

Product updates | How-to tips
FAQs & more

CONNECT WITH DONGLE

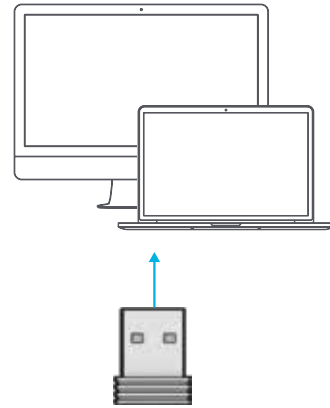
1

Install included batteries
2 batteries included in package



Pull tab from
GO Mouse

2



Install 2.4G USB dongle and turn on
GO Keyboard and GO Mouse

OR

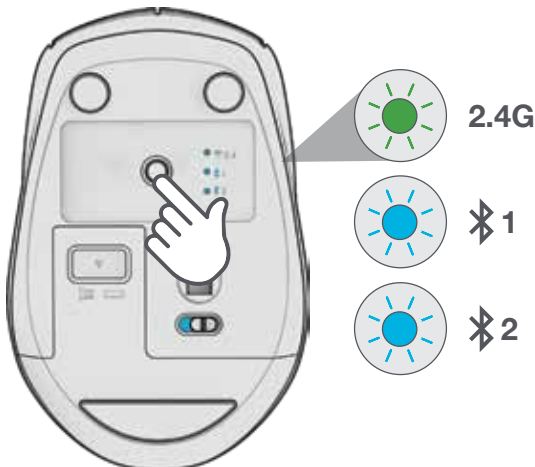
Follow Step 2 to connect via Bluetooth

CONNECT WITH BLUETOOTH

1

SWITCH CONNECTION:

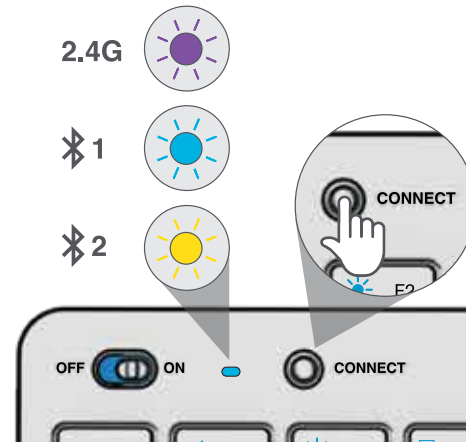
Quick press button
(Light switches to associated connection)



2

PAIRING

Switch to or
Press and hold button to enter Pairing Mode (Blinking light)
Select "JLab GO Keyboard/Mouse" in device settings



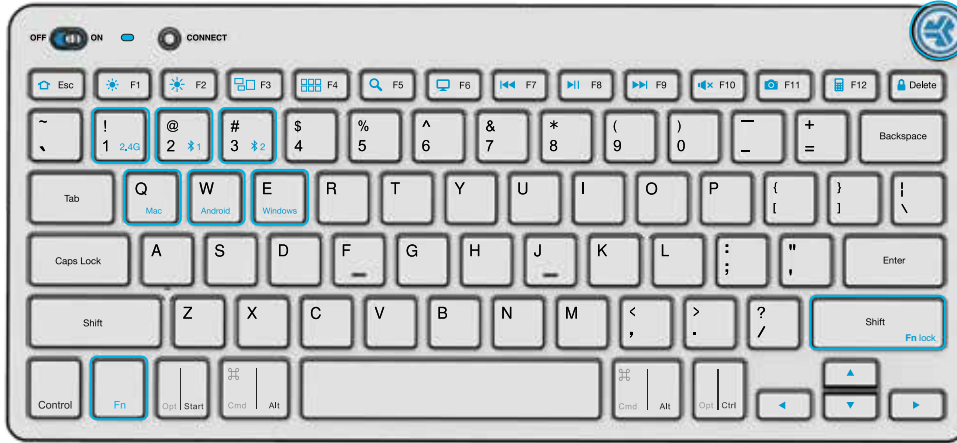
KEYS / CONTROLS

Fn + 1 / 2 / 3:

Quick connection switch

Fn + Q / W / E:

Switch to Mac / Android / Windows keyboard layout



MEDIA DIAL

Vol +/- : Rotate

Play/Pause: Single press

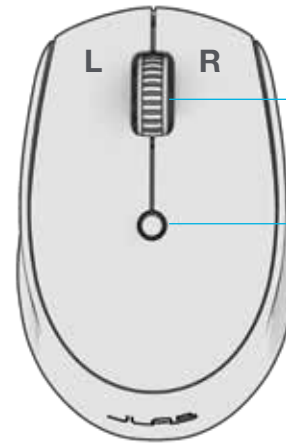
Track Forward: Double press

Track Back: Press and hold

Fn + Right Shift: Lock / Unlock Fn key (See Shortcut Keys)

SHORTCUT KEYS

Fn +	MAC	PC	Android
Esc	N/A	Homepage	Homepage
F1	Brightness -	Brightness -	Brightness -
F2	Brightness +	Brightness +	Brightness +
F3	Task Control	Task Control	N/A
F4	Show Applications	Notification Center	N/A
F5	Search	Search	Search
F6	Desktop	Desktop	N/A
F7	Track Back	Track Back	Track Back
F8	Play/Pause	Play/Pause	Play Pause
F9	Track Forward	Track Forward	Track Forward
F10	Mute	Mute	Mute
F11	Screenshot	Screenshot	Screenshot
F12	Dashboard	Calculator	N/A
Delete	Screen lock	Screen lock	Screen lock



Scroll + Middle Button

DPI Button:
Toggle mouse sensitivity:
800/Low
1200/Medium
1600/High



[Shop products](#) | [Product alerts](#) | [Burn-in your headphones](#)

JLab Store + Burn-in Tool

