

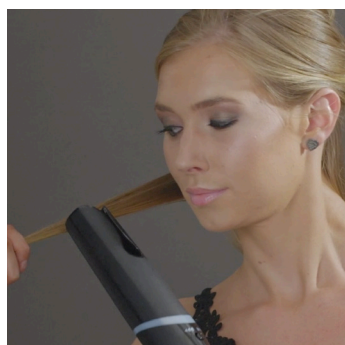
HOW TO GET STARTED WITH AUTO WAVE & CURL

REVAMP
Professional

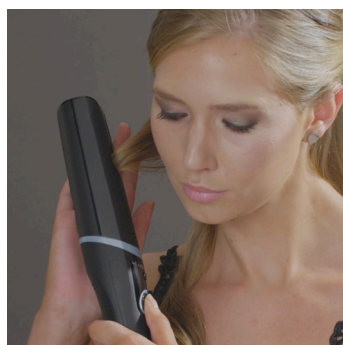


Styling direction button

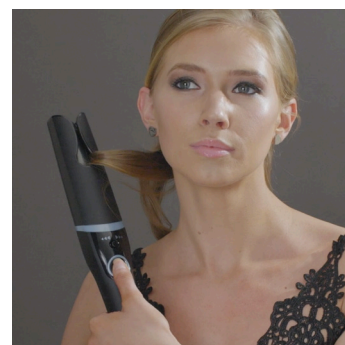
Select the desired temperature, and choose the styling direction



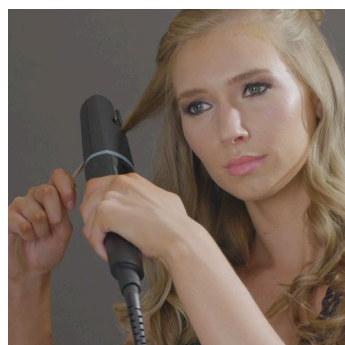
Take a small section of your hair and place it down through the ceramic plates to hold it softly to preheat



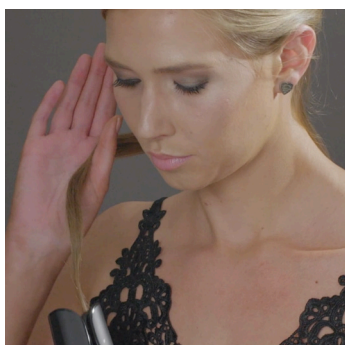
Choose the direction of the curl by moving the direction switch



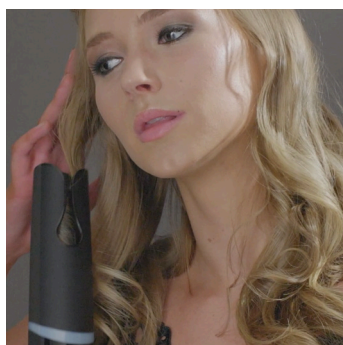
Press the rotating button to style



Holding the appliance around 50-70 mm away from your head



Gently pull away for loose curls



Press and hold the curling button and the hair will be automatically drawn into the heated barrel

TIME	SETTING	NUMBER OF BEEPS
1	1 beep	5 seconds
2	2 beep	10 seconds
3	3 beep	15 seconds
4	4 beep	20 seconds
5	5 beep	25 seconds
6	6 beep	30 seconds

Select setting 1 for fine hair, up to 6 for thicker or longer hair

Curling Button
(with audible beep for a different curl types)



on/off
Temperature Setting

Final look

